

Reissued: 2-Jun-05

Model: PRIPORT PINKGOLD/PGB4/PGP		Date: 2-Dec-03	No: R-C238-012a
Subject: New Model PGA3P/PGB4P information (China only)		Prepared by: M. Kanomata, Priport Service Planning Section	
Classification:	<input type="checkbox"/> Troubleshooting <input type="checkbox"/> Part information <input type="checkbox"/> Action required <input type="checkbox"/> Mechanical <input type="checkbox"/> Electrical <input type="checkbox"/> Service manual revision <input type="checkbox"/> Paper path <input type="checkbox"/> Transmit/receive <input type="checkbox"/> Retrofit information <input checked="" type="checkbox"/> Other (New model information)		
Model Name: PINKGOLD: Ricoh JP3000/JP3800, Gestetner 5430/5428C, RexRotary 1330, nashuatec CP430, Savin 3260DNP, Standard SD370, Lanier LDD030 PGB4 (China only): Ricoh JP2800, Gestetner 5425C PGA3P (China only): Ricoh JP3810P, Gestetner 5438P PGB4P (China only): Ricoh JP2810P, Gestetner 5435P			

RTB Reissue

The areas in ***bold/italics*** were changed.

Changes:

- 1. The Paper Feed Side Pad (Paper Plate Thin Pad) was deleted from the accessory list (section 1.2.1).***
Note: This part was deleted from the beginning of mass-production (PGA3-P, PGB4-P only).
- 2. Some section numbers were changed to match the PINKGOLD Service Manual.***

This bulletin contains all service-related information unique to Model PGA3P (C246) / PGB4P (C254), which is scheduled for official release in China in February 2004. Please add this information to your PinkGold Series Service Manuals and also refer to RTB #R-C238-004 for PGB4 information.

Note: Please also see MB #M-C238-025 for a list of the components unique to the PGA3P/PGB4P.

Reissued: 2-Jun-05

Model: PRIPORT PINKGOLD/PGB4/PGP	Date: 2-Dec-03	No: R-C238-012a
---	-----------------------	------------------------

OVERALL INFORMATION

SECTIONS CONTAINING DIFFERENCES BETWEEN THE C246/C254 AND C238/C247

Service Manual:

Section	Item	Remarks
1	Installation	<i>Some items changed.</i>
2	Preventive maintenance	<i>(no differences)</i>
3	Replacement and adjustment	<i>(no differences)</i>
4	Troubleshooting	Some items changed.
5	Service tables	Some items changed.
6	Detailed section descriptions	<i>(no differences)</i>
7	Point to point diagrams	<i>(no differences)</i>
SPEC	Specifications	Some items added.
C600	Document Feeder	<i>(no differences)</i>
CLT	Printer controller unit	New documents

Reissued: 2-Jun-05

Model: PRIPORT PINKGOLD/PGB4/PGP

Date: 2-Dec-03

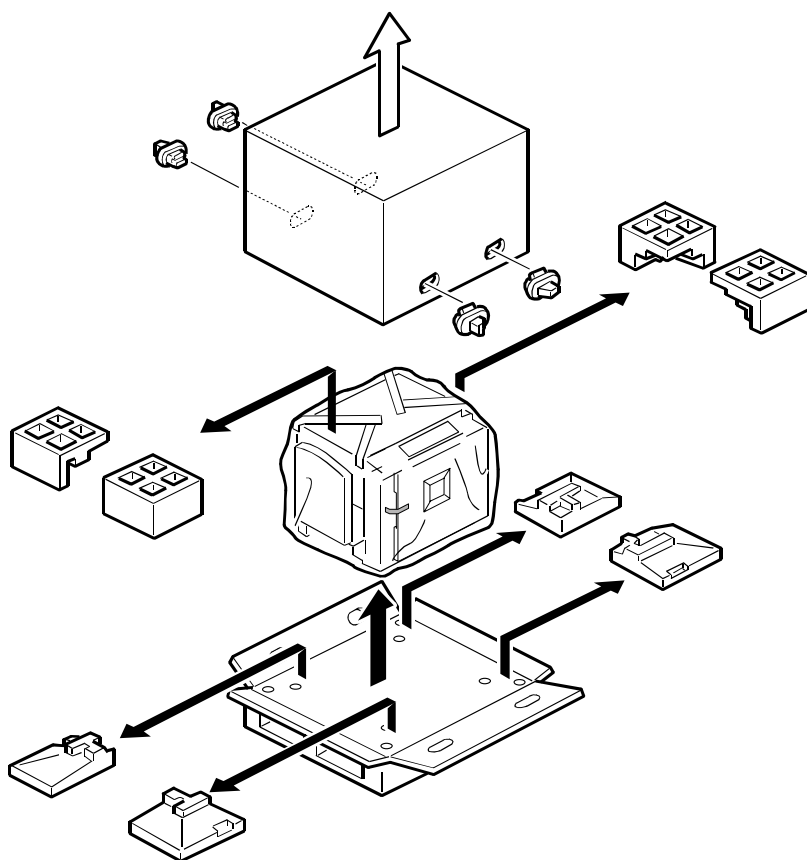
No: R-C238-012a

1. INSTALLATION

1.2 INSTALLATION PROCEDURE

1.2.1 MAIN BODY

Accessory Check



Make sure that you have all the accessories listed below:

<i>Description</i>	<i>Quantity</i>
1. Master Spool.....	2
2. Operating Instructions.....	1
3. NECR (Ricoh version only).....	1
4. Model Name Plates (C238-22, -52 and -54 only).....	1 set

Reissued: 2-Jun-05

Model: PRIPORT PINKGOLD/PGB4/PGP

Date: 2-Dec-03

No: R-C238-012a

4. TROUBLESHOOTING

4.3 FUSE, LED, VR, DIP-SW, AND TP TABLES

4.3.4 DIP SWITCHES

Ink detection board

No.	Normal drum for PGA3P	Normal drum for PGB4P	Colour drum	A4 black drum
SW1	OFF	OFF	OFF	ON
SW2	OFF	OFF	ON	OFF
SW3	ON	OFF	OFF	OFF
SW4	OFF	OFF	OFF	OFF

Reissued: 2-Jun-05

Model: PRIPORT PINKGOLD/PGB4/PGP	Date: 2-Dec-03	No: R-C238-012a
---	-----------------------	------------------------

5. SERVICE TABLES

5.7 MAIN MENU NO.6: ADJUSTMENT

The colour drum for Model PGA3P is the same as that used on the PinkGold A3, however the normal drum has been changed to one designed to further reduce noise. This new normal drum uses the drum flange from Model HP4. Therefore on the PGA3P, the normal and colour drums have separate components and also have separate settings for the three SP modes listed below.

Differences in SP Mode Settings

The settings for the following SP modes are different for normal vs. colour drums installed on Models PGA3P (see tables on next page). Please note that this does not apply to the PGB4P.

- SP6-23 (Paper Registration - Each Speed)
- SP6-24 (Paper Registration - Each Speed (skip feed))
- SP6-27 (Paper Roller Buckle)

Important: Although these settings are different, it is not necessary to perform any manual settings when either drum is replaced. This is because the machine automatically applies the appropriate settings according to the setting of the Dip SW on each drum. Therefore please be sure not to change these Dip SW settings.

NOTE: 1) Since the actual values for the above modes are different for the normal and color drums, it is only possible to access/change these settings for the drum installed. For example if the normal drum is installed, only the settings for SP6-23, -24 and -27 designed for the normal drum can be accessed.

2) If there is no drum installed in the machine, the settings for the above SP modes cannot be accessed, the Jam M indicator will blink, and the four-digit paper counter on the operation panel will be displayed as "dru".

Reissued: 2-Jun-05

Model: PRIPORT PINKGOLD/PGB4/PGP	Date: 2-Dec-03	No: R-C238-012a
---	-----------------------	------------------------

5.7.6 SP6-23 (PAPER REGISTRATION – EACH SPEED)

Menu Items	Speed	Default	Settings	Notes
Paper registration –each speed	15 rpm	101	0 to 255	Used for: PGA3P normal drum
	30 rpm	103		
	60 rpm	92		
	75 rpm	84		
	90 rpm	72		
	105 rpm	59		
	120 rpm	45		
Paper registration –each speed	15 rpm	103	0 to 255	Used for: PGA3P colour drum
	30 rpm	107		
	60 rpm	93		
	75 rpm	82		
	90 rpm	70		
	105 rpm	59		
	120 rpm	45		
Paper registration –each speed	15 rpm	101	0 to 255	Used for: PGB4P
	30 rpm	102		
	60 rpm	94		
	75 rpm	86		
	90 rpm	72		
	105 rpm	58		
	120 rpm	72		

Reissued: 2-Jun-05

Model: PRIPORT PINKGOLD/PGB4/PGP

Date: 2-Dec-03

No: R-C238-012a

5.7.7 SP6-24 (PAPER REGISTRATION – EACH SPEED (SKIP FEED))

Menu Items	Speed	Default	Settings	Notes
Paper registration –each speed (skip feed)	15 rpm	101	0 to 255	Used for: PGA3P normal drum
	30 rpm	103		
	60 rpm	93		
	75 rpm	86		
	90 rpm	75		
	105 rpm	63		
	120 rpm	50		
Paper registration –each speed (skip feed)	15 rpm	103	0 to 255	Used for: PGA3P colour drum
	30 rpm	107		
	60 rpm	94		
	75 rpm	84		
	90 rpm	73		
	105 rpm	63		
	120 rpm	50		
Paper registration –each speed (skip feed)	15 rpm	101	0 to 255	Used for: PGB4P
	30 rpm	102		
	60 rpm	95		
	75 rpm	87		
	90 rpm	73		
	105 rpm	60		
	120 rpm	44		

Reissued: 2-Jun-05

Model: PRIPORT PINKGOLD/PGB4/PGP

Date: 2-Dec-03

No: R-C238-012a

5.7.8 SP6-27 (PRESS ROLLER BUCKLE)

Menu Items	Speed	Default	Settings	Notes
Press roller buckle	15 rpm	1.00	0.00 to 1.00	Used for: PGA3P normal drum
	30 rpm	1.00		
	60 rpm	0.92		
	75 rpm	0.92		
	90 rpm	0.92		
	105 rpm	0.92		
	120 rpm	0.92		
Press roller buckle	15 rpm	1.00	0.00 to 1.00	Used for: PGA3P colour drum
	30 rpm	1.00		
	60 rpm	0.88		
	75 rpm	0.87		
	90 rpm	0.85		
	105 rpm	0.86		
	120 rpm	0.88		
Press roller buckle	15 rpm	1.00	0.00 to 1.00	Used for: PGB4P
	30 rpm	1.00		
	60 rpm	0.93		
	75 rpm	0.92		
	90 rpm	0.90		
	105 rpm	0.90		
	120 rpm	0.90		

Reissued: 2-Jun-05

Model: PRIORT PINKGOLD/PGB4/PGP	Date: 2-Dec-03	No: R-C238-012a
--	-----------------------	------------------------

SPECIFICATIONS

The following are the only differences in specification between this model and the C238/C247. All other items are the same.

No.	Item	Remarks
1	Model names	A3 size: Ricoh Priort JP3810P (C246-96) Gestetner 5438P (C246-82) B4 size: Ricoh Priort JP2810P (C254-96) Gestetner 5435P (C254-82)
2	Printer controller unit	Embedded Printer Controller Unit fitted as standard
3	Printer drivers	Drivers support Chinese

PRINTER CONTROLLER UNIT



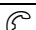


Trademarks

Microsoft®, Windows®, and MS-DOS® are registered trademarks of Microsoft Corporation in the United States and/or other countries.

Other product names used herein are for identification purposes only and may be trademarks of their respective companies. We disclaim any and all rights involved with those marks.

Symbols

This manual uses several symbols. The meanings of these symbols are as follows:

	See or Refer to
	Clip ring
	E-ring
	Screw
	Connector

Reissued: 2-Jun-05

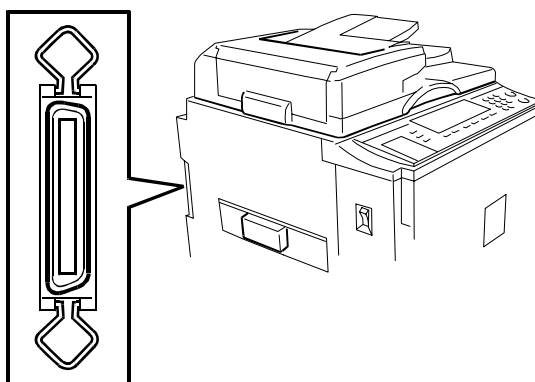
Model: PRIPORT PINKGOLD/PGB4/PGP	Date: 2-Dec-03	No: R-C238-012a
---	-----------------------	------------------------

INSTALLATION

The PGA3P/PGB4P are equipped with a standard printer controller unit and Video I/F board. Connect the printer controller unit to the host computer with a parallel cable. Then, install the printer driver in the host computer.

Host computer	IBM PC/AT compatible PC
Interface	IEEE1284B (Compatible, Nibble, ECP)
Operating Systems Supported	Windows 95/98/Me, Windows NT4.0, Windows 2000/XP
Printer Driver	Digital Duplicator A3 300 GDI Digital Duplicator B4 300 GDI

NOTE: The Printer drivers for Windows NT4.0 are only for Intel x86 compatible platforms. There is no Windows NT4.0 printer driver for the PowerPC, Alpha, or MIPS platforms.



Reissued: 2-Jun-05

Model: PRIPORT PINKGOLD/PGB4/PGP

Date: 2-Dec-03

No: R-C238-012a

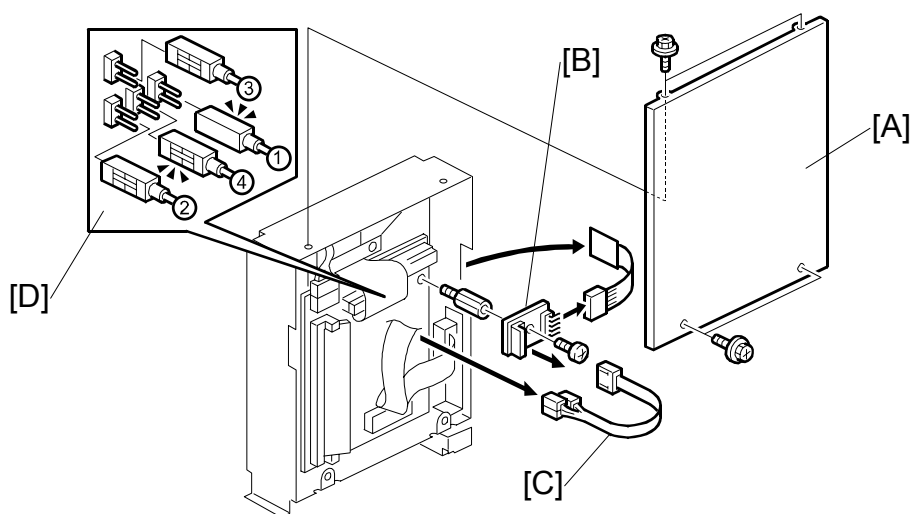
REPLACEMENT AND ADJUSTMENT

⚠ CAUTION

Before removing any of the controller components, make sure to do the following:

1. Turn off the machine main power.
Note: However if the “Data-in” lamp on the operation panel is blinking or lit, wait until the document or report is printed before turning the power off.
2. After the power is off, disconnect the power cord from the outlet and the cable from the machine.

CONTROLLER BOARD MEMORY



C249R951.WMF

[A]: Cover

[B]: Keypad board

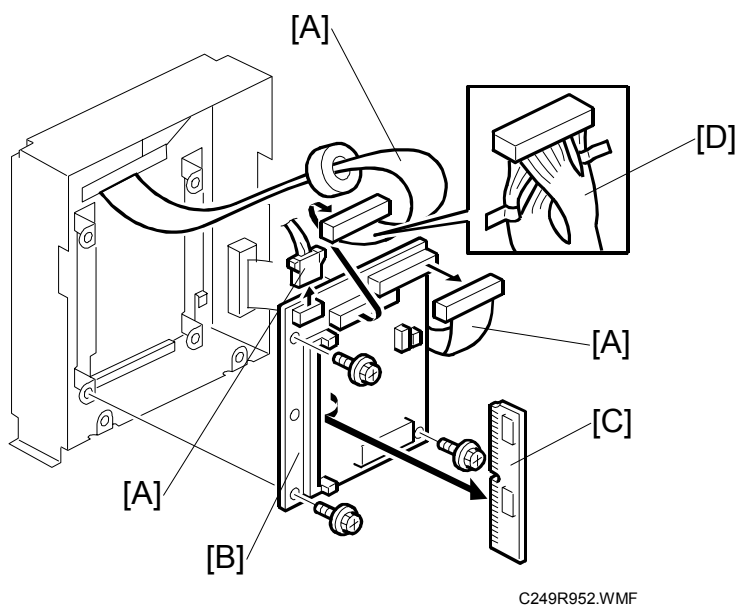
NOTE: When you attach the connector [C], make sure to attach it in the correct position and orientation [D].

Reissued: 2-Jun-05

Model: PRIPORT PINKGOLD/PGB4/PGP

Date: 2-Dec-03

No: R-C238-012a



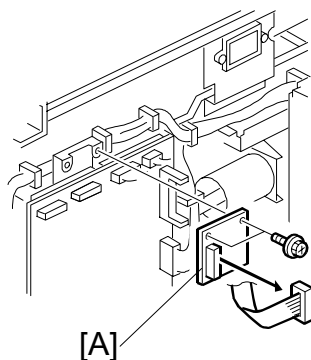
[A]: Connector

[B]: Printer controller board

[C]: SIMM module

NOTE: The twisted end of the harness [D] should be connected to the controller board.

VIDEO I/F BOARD



[A]: Video I/F Board

Reissued: 2-Jun-05

Model: PRIPORT PINKGOLD/PGB4/PGP

Date: 2-Dec-03

No: R-C238-012a

LOAD PROGRAM

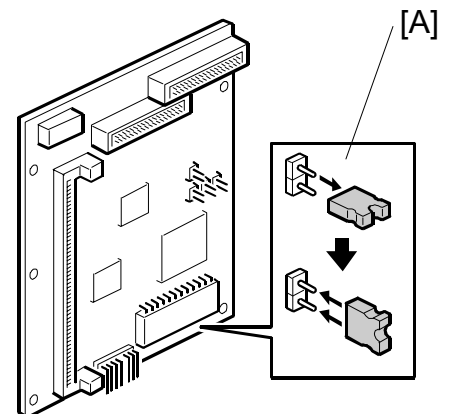
This procedure is for upgrading the system firmware for the controller.

NOTE: If the controller does not start up after a firmware update, try downloading the firmware again. If it still does not work, replace the flash ROM on the printer controller board.

⚠ CAUTION

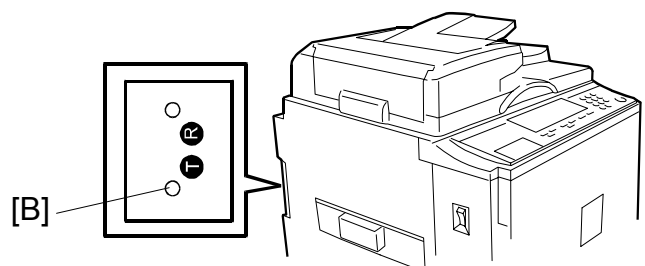
Do not turn off the machine while downloading the firmware.

1. Before downloading new firmware, print the test page and check the current version.
2. Turn off the machine.
3. Remove the rear cover and controller cover.
4. Set the jumper next to the flash ROM to the ON position [A].
5. Turn on the machine.
6. Boot up the PC and access an MS-DOS prompt or Command prompt.
7. Use the COPY command to update the flash ROM, . e.g.
"copy file_name LPT1:" (where LPT1 is the connected port).



C249R957.WMF

8. While the flash ROM is updating, the left LED [B] on the control button board remains lit.



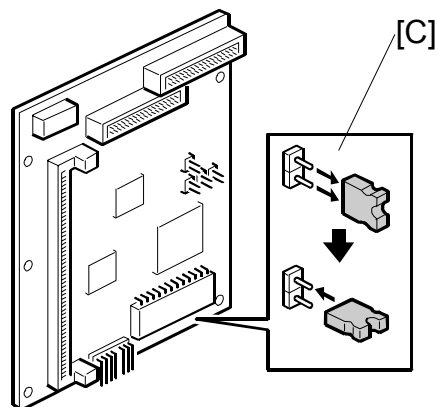
Reissued: 2-Jun-05

Model: PRIPORT PINKGOLD/PGB4/PGP

Date: 2-Dec-03

No: R-C238-012a

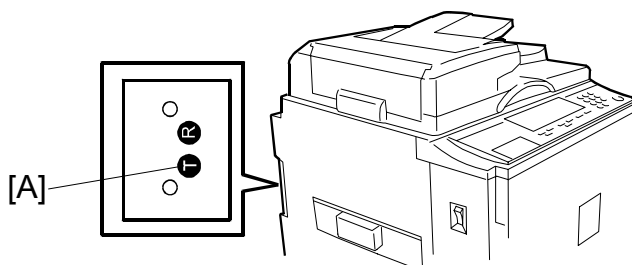
9. When the left LED flashes rapidly, the update is complete.
10. Turn off the machine.
11. Set the jumper back to the OFF position [C].
12. Turn on the machine and print out the test page using the test page button. Then check to see that the new version has been successfully installed.



C249R958.WMF

TEST PAGE

Press the test page button [A] on the keypad board. The right LED will start flashing quickly, indicating that the controller is in the process of creating the test page.



Reissued: 2-Jun-05

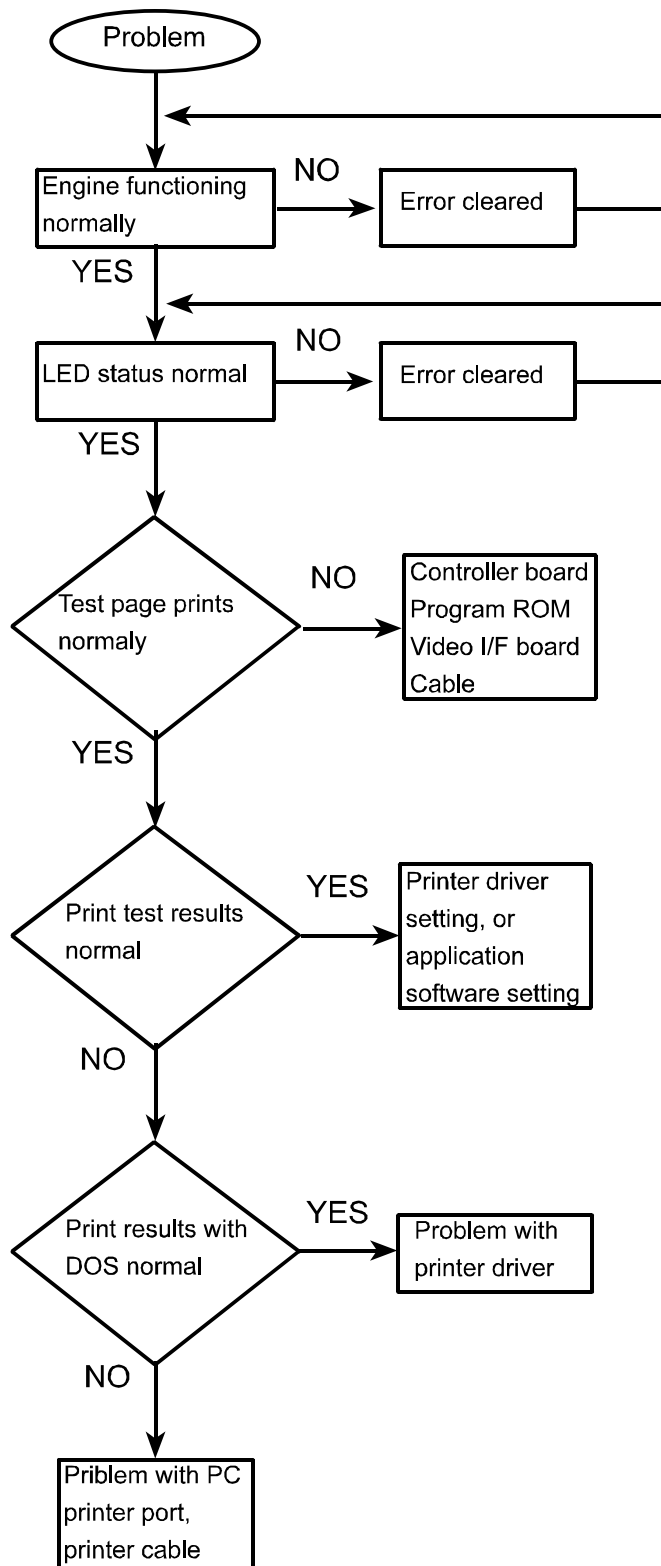
Model: PRIPORT PINKGOLD/PGB4/PGP

Date: 2-Dec-03

No: R-C238-012a

TROUBLESHOOTING

TROUBLESHOOTING FLOWCHART



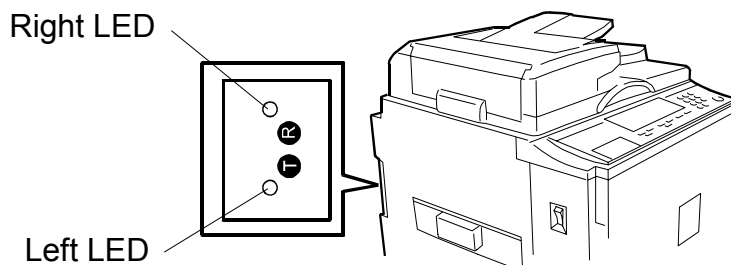
Reissued: 2-Jun-05

Model: PRIPORT PINKGOLD/PGB4/PGP

Date: 2-Dec-03

No: R-C238-012a

LED STATUS LIGHT SEQUENCE AND CONDITIONS



Power on and activation

STATUS	DESCRIPTION	CHECK POINT
All LEDs are off	No power supply	-No AC power supplied. -AC cord not properly connected. -Power supply failure in the controller.
Right LED is on	Power on	-
Left LED is flashing	Performing self-diagnostic test before Ready condition	-
Left LED is flashing rapidly	Receiving data	-
Left LED remains on	-Transferring data -Creating a master	-
Left LED remains off	Idle	-
Left LED flashing slowly at regular intervals	Engine error	Check message on operation panel.

Reissued: 2-Jun-05

Model: PRIPORT PINKGOLD/PGB4/PGP

Date: 2-Dec-03

No: R-C238-012a

Test page button

STATUS	DESCRIPTION	CHECK POINT
Left LED is flashing	Receiving data	-
Left LED is on	Creating a master	-
Left LED remains on	Printing	-
Left LED flashes then remains off.	No response from the engine.	-Turn the engine Off/On. -Check if the controller is properly connected to the engine. -Check if the engine is online. -Check if the SIMM card is positioned correctly.
Left LED flashes slowly at regular intervals	Engine error	-Check the error message on the engine control panel. -Check if the controller is properly connected to the engine.

Reissued: 2-Jun-05

Model: PRIPORT PINKGOLD/PGB4/PGP	Date: 2-Dec-03	No: R-C238-012a
---	-----------------------	------------------------

PRINTER DRIVER OPERATION

If the Windows test page does not print or does not look right, check the printer driver operation using these steps:

1. Select the Details tab in the Properties menu of the printer driver.
2. Change the port connection to "File:".
3. Click on the Apply button. Then select the General tab and click on the Print Test Page button.
4. Set the file name (e.g. test.prn), then set the disk/directory location and save the file.
5. Click "YES" when the message pops up and asks whether the test page printed correctly.
6. Access an MS-DOS prompt or command prompt.
7. Check to see that the engine and controller are ready for printing. Then execute the following command at the MS-DOS prompt or command prompt. "copy /b test.prn lpt1".

NOTE: 1) Always input "/b" after the Copy command.

2) The above example applies if the file name saved in Step 4 is "test.prn".

3) If the controller is connected to the second PC port, replace "lpt1" with "lpt2".

8. Input "exit," then exit from the MS-DOS prompt or command prompt.
9. If the test page has printed correctly, change the printer driver port from "File:" back to its previous setting.

SERVICE TABLES

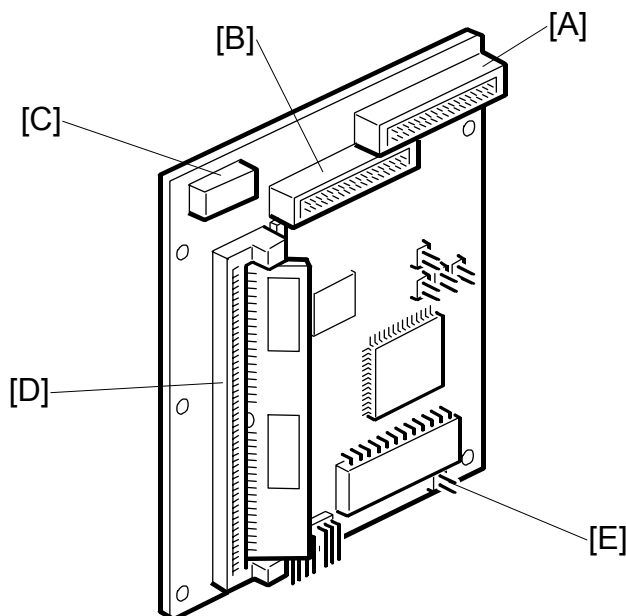
There are no SP modes for the printer controller unit.

Reissued: 2-Jun-05

Model: PRIPORT PINKGOLD/PGB4/PGP	Date: 2-Dec-03	No: R-C238-012a
---	-----------------------	------------------------

DETAILED DESCRIPTIONS

OVERVIEW



C249D950.WMF

DESCRIPTION	CONTROLLER
CPU	Analog Devices ADSP chip
RAM	16MB (SIMM)
Flash ROM	1MB EPROM

REF.	CONNECTOR		DESCRIPTION
	Name	Configuration	
A	IEEE1284 I/F	26-pin socket	To IEEE1284 Interface
B	Engine Interface	26-pin socket	To video I/F board
C	Power connector	4-pin socket	To power cable
D	SIMM Interface	72-pin SIMM	For connecting the SIMM module
E	Upgrade firmware jumper	2-pin	Upgrading controller firmware

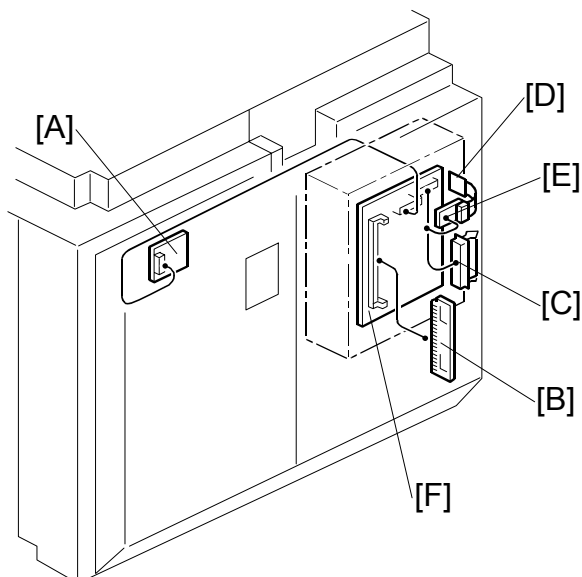
Reissued: 2-Jun-05

Model: PRIPORT PINKGOLD/PGB4/PGP

Date: 2-Dec-03

No: R-C238-012a

MACHINE LAYOUT



REF.	COMPONENT
A	Video Interface Board
B	SIMM Module
C	IEEE1284 Interface
D	Control Button Board
E	Keypad Board
F	Printer Controller Board

Reissued: 2-Jun-05

Model: PRIPORT PINKGOLD/PGB4/PGP	Date: 2-Dec-03	No: R-C238-012a
---	-----------------------	------------------------

SEPECIFICATIONS

Controller Type	Embedded
Configuration	Internal embedded controller
Printer Language	GDI
Print Resolution	300dpi
Memory (RAM)	16MB (SIMM)
Resident Fonts	None
Host Interface	IEEE1284B (Compatible, Nibble, ECP)
Host PC	IBM PC/AT compatible PC
Operating Systems Supported	Windows 95/98/Me, Windows NT4.0 (*1), Windows 2000/XP
Printer Driver	Digital Duplicator A3 300 GDI Digital Duplicator B4 300 GDI

NOTE: The Printer drivers for Windows NT4.0 are only for Intel x86 compatible platforms. There is no Windows NT4.0 printer driver for the PowerPC, Alpha, or MIPS platforms.